

TIMELESS
TREASURES

Stars of Freedom

featuring Let Freedom Ring
by Wing and a Prayer Design



Photo: D. James Dee

Finished Quilt: 63" x 76"

Yardage Requirements

- 1 1/3 yards JT-C6397 BEIGE ~ Freedom Squares (2 repeats)
- 1 5/8 yard JT-C6398 NAVY ~ Stars (Outer border and binding)
- 1/2 yard JT-C6399 RED ~ Stripes (Inner border)
- 4 1/4 yards JT-C6401 BEIGE ~ Tossed Words (squares and backing)
- 5/8 yard JT-C5837 RED ~ Background Texture (hour-glass blocks)
- 5/8 yard JT-C5837 BLUE ~ Background Texture (hour-glass blocks)
- 5/8 yard JT-C5841 RED ~ Small Check (hour-glass blocks)
- 5/8 yard JT-C5841 BLUE ~ Small Check (hour-glass blocks)

Directions

1. From the two panels of JT-C6397 BEIGE, cut thirty 7" blocks. *Note: Squaring will cut off a small piece of the block border.* The quilt shown will use twelve motif blocks and fourteen word blocks.

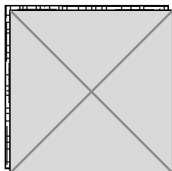


figure 1

2. Cut six 7" squares of the tossed words (JT-C6401 BEIGE).

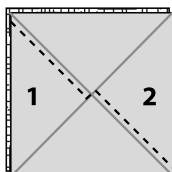


figure 2

Hour-glass Blocks

Note: Hour-glass blocks must be made as instructed in order for the stars to spin in the correct direction.

3. Cut eight 8 1/2" squares each of the red and blue textures (JT-C5837) and the red and blue checks (JT-C5841).

4. Layer the squares right sides together: red texture on red check and blue texture on blue check.

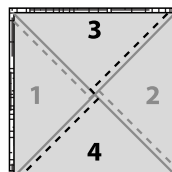


figure 3

5. Draw an X on the wrong side of the red and blue texture squares. *Note: Texture squares must be on top.* (figure 1)

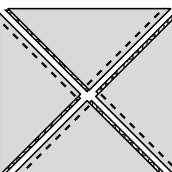
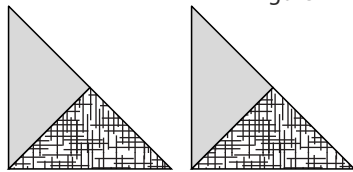
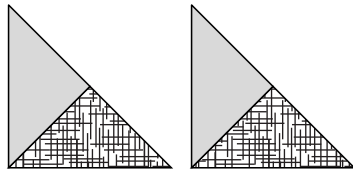


figure 4

6. Refer to figure 2 and stitch 1/4" to the inside of the drawn line starting with the #1 quadrant. When you reach the intersecting drawn line, pivot the needle and stitch a few stitches on the drawn line. Pivot again and continue stitching 1/4" to the inside of the drawn line in the #2 quadrant.



7. Repeat with #3 and #4 quadrants as shown in figure 3.



8. Cut apart on drawn lines and press open toward the checked fabrics. (figure 4)

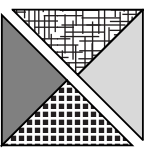


figure 5

9. Sew the red/red check triangles to the blue/blue check triangles, right sides together, matching center seams. (figure 5) You

will have thirty-two hour-glass blocks, but will only use thirty-one in the quilt. Square each block to 7".

Quilt Assembly

10. Assemble the quilt as shown in the Quilt Layout Diagram, paying close attention to the direction of the hour-glass blocks. The top should measure 46" x 59".

Inner border

11. Cut six 2" x WOF strips. Using a straight connection sew the inner border strips end-to-end, right sides together. From the long strip cut two 59" strips for the sides and two 49 1/2" strips for the top and bottom. Add the inner borders to the sides of the quilt and then the top and bottom.

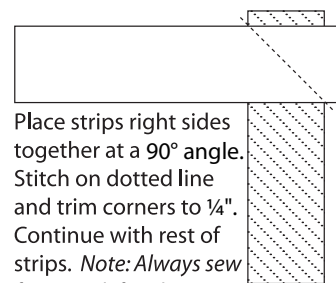
Outer Border

12. Cut six 6 1/2" x WOF strips. Using a straight connection sew the six border strips end-to-end right sides together. Cut two 62 1/2" borders and sew to sides of the quilt. Cut two 63" borders and sew to top and bottom.

Finishing the Quilt

13. Sandwich the quilt top, batting and backing and quilt as desired.

14. Cut seven 2 1/2" x WOF strips for binding. To make the binding, place two 2 1/2" x WOF strips of right sides together at a 90° angle. (figure 6)



Place strips right sides together at a 90° angle. Stitch on dotted line and trim corners to 1/4". Continue with rest of strips. *Note: Always sew from top left to bottom right.*

figure 6

15. Sew to the front side of the quilt, lining up raw edges. Repeat, adding the rest of the binding strips. *Note: Always sew from top left to bottom right. Fold the binding in half lengthwise, wrong sides together, and press.*

16. Sew to the front side of the quilt, lining up raw edges.

16. Fold the binding over the raw edges and stitch to back of the quilt by hand.

©2010 Wing And A Prayer Design
(620) 767-6628

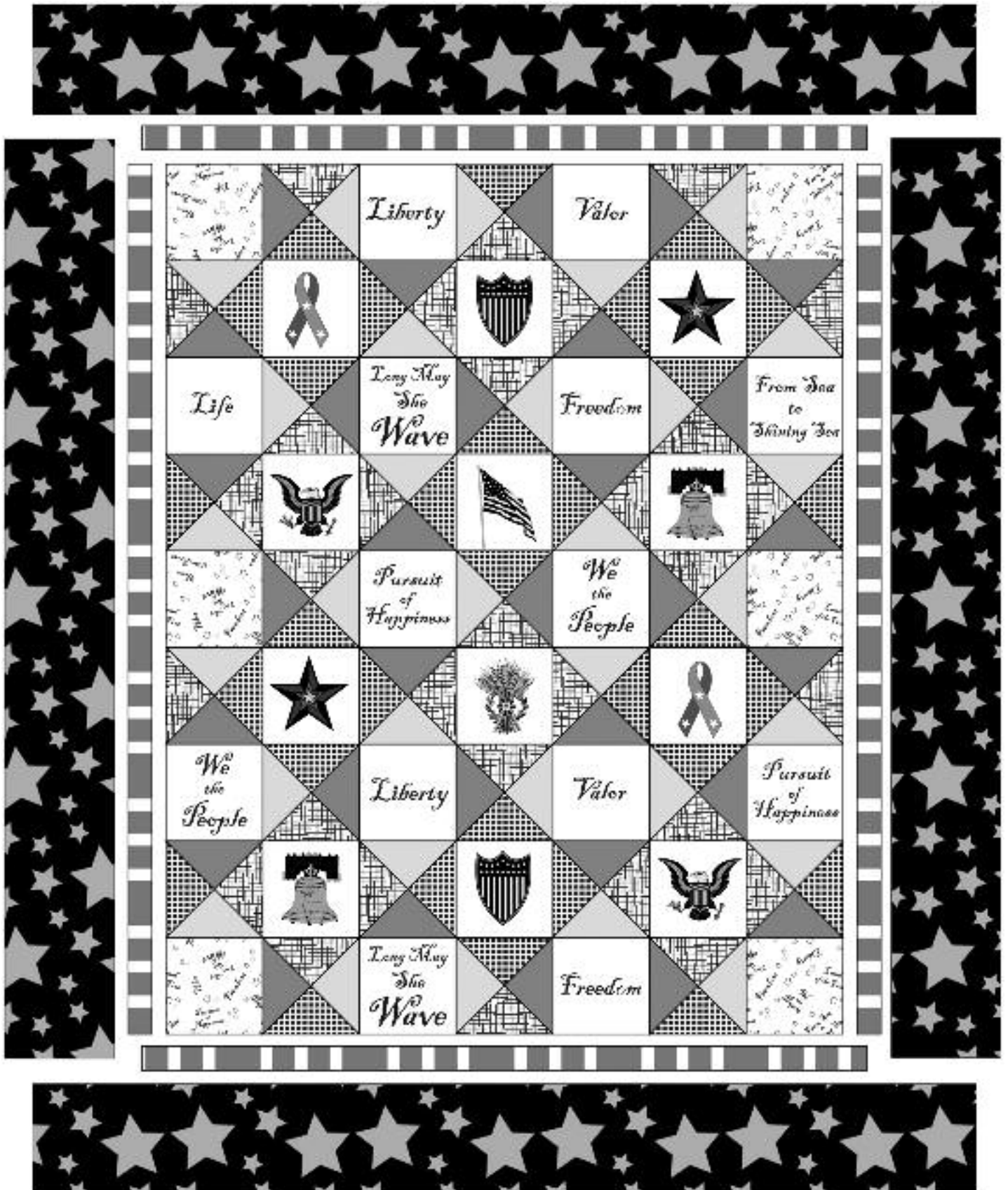
www.wingandaprayerdesign.com

Permission is granted to shop owners and teachers to make copies for promotional or educational purposes only.

This pattern may not be reproduced for commercial purposes (i.e may not be sold).

This pattern may not be reproduced for ANY PURPOSE after February 1, 2011.

Quilt Layout Diagram





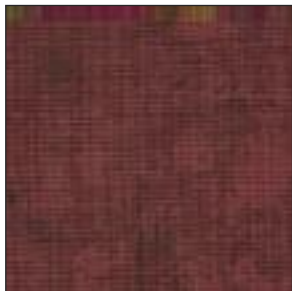
JT-C6398 NAVY



JT-C6399 RED



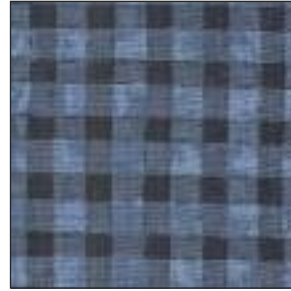
JT-C6401 BEIGE



JT-C5837 RED



JT-C5837 BLUE



JT-C5841 BLUE



JT-C5841 RED

ALL FABRICS EXCEPT PANEL, BELOW, ARE SHOWN 50% OF ACTUAL SIZE.



JT-C6397 BEIGE

PANEL SHOWS FULL WIDTH OF FABRIC & 24" REPEAT.